

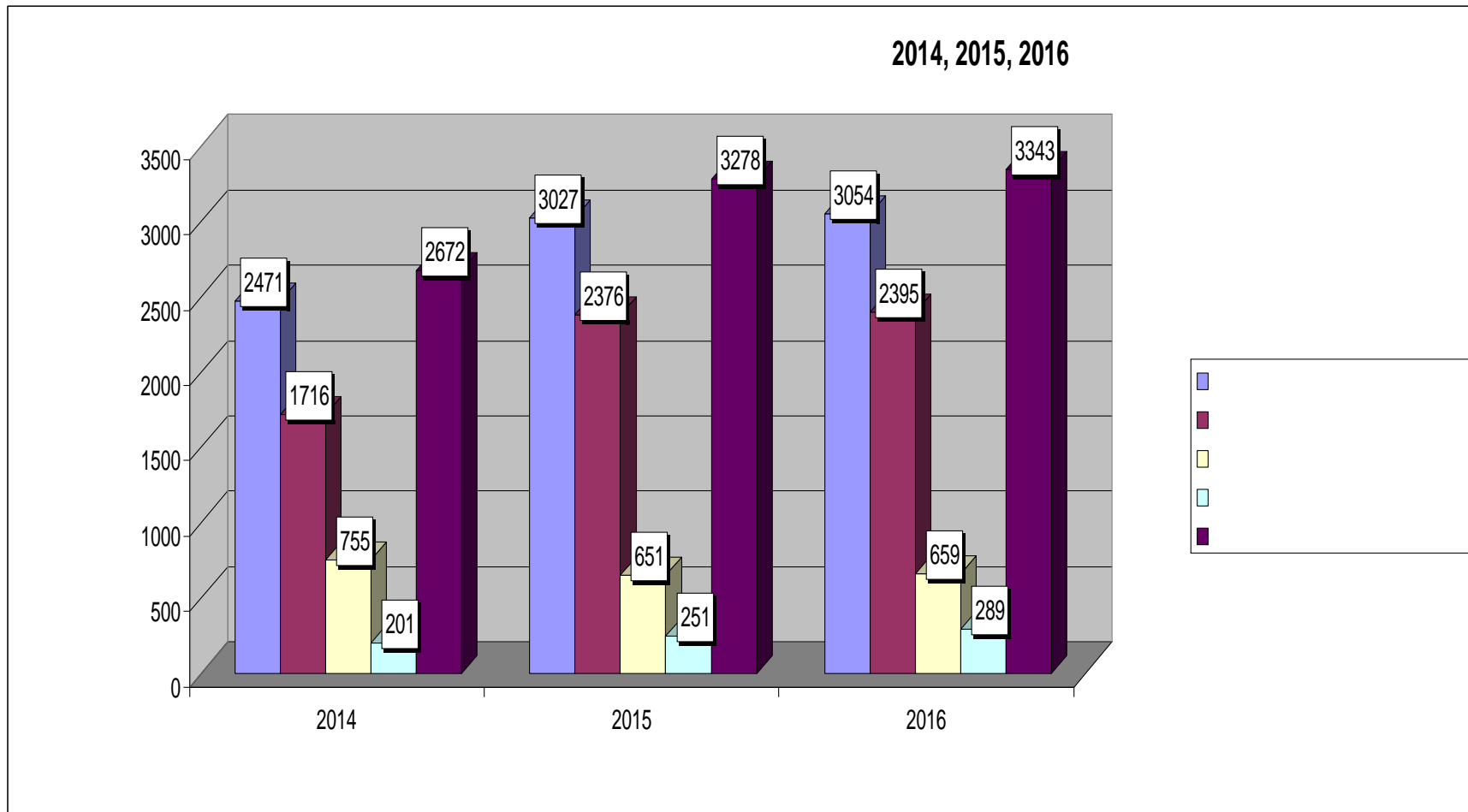


2016 .

—

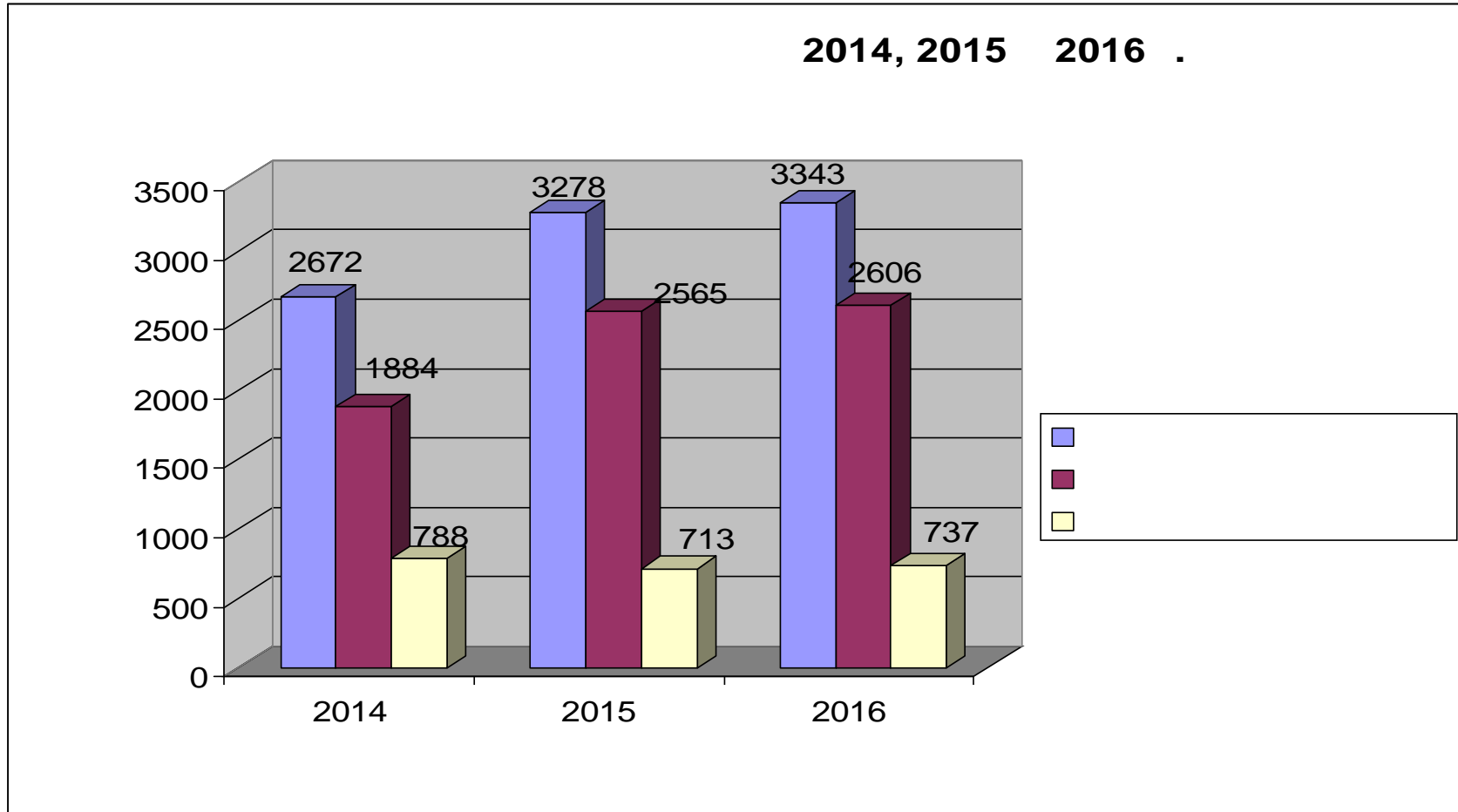


-





-



	/				3-	%	.	.
2016 .		321	270	21	278	87%	35.25	31.25
		102	59	25	69	68%		
2015 .		298	263	20	280	94%	34.92	32.50
		121	78	29	103	85%		
2014 .		151	148	2	147	97%	22.50	21.58
		119	68	41	99	83%		

	/				3-	%	.	.
2016 .		117	102	15	113	97%	14.08	14.08
		52	39	13	47	90%		
2015 .		303	251	34	283	93%	37.17	34.33
		143	100	27	124	87%		
2014 .		209	205	4	208	100%	34.75	33.42
		208	148	44	190	91%		

	/				3-	%	.	.
2016 .		440	375	28	387	88%	46.67	42.33
		120	93	12	93	78%		
2015 .		352	317	20	331	94%	39.92	38.17
		127	94	27	112	88%		
2014 .		211	206	3	207	98%	34.42	33.00
		202	145	42	173	86%		

	/				3-	%	.	.
2016 .		439	365	42	391	89%	46.92	42.92
		124	76	32	89	72%		
2015 .		353	314	20	328	93%	42.17	39.67
		153	116	26	124	81%		
2014 .		212	201	8	205	97%	38.50	36.67
		250	191	40	215	86%		

	/				3-	%	.	.
2016 .		493	386	54	383	78%	51.00	44.92
		119	68	31	84	71%		
2015 .		583	434	74	458	79%	52.58	45.25
		48	30	5	33	69%		
2014 .		560	414	41	411	73%	47.00	38.25
		4	4	0	4	100%		

	/				3-	%	.	.
2016 .		471	402	40	400	85%	49.67	45.67
		125	76	30	91	73%		
2015 .		460	352	50	353	77%	42.58	36.75
		51	34	5	35	69%		
2014 .		541	429	34	423	78%	45.50	39.00
		5	5	0	4	80%		

	/				3-	%	.	.
2016 .		325	276	31	296	91%	35.00	33.08
		95	66	24	88	93%		
2015 .		216	175	30	203	94%	23.83	22.58
		70	55	11	66	94%		



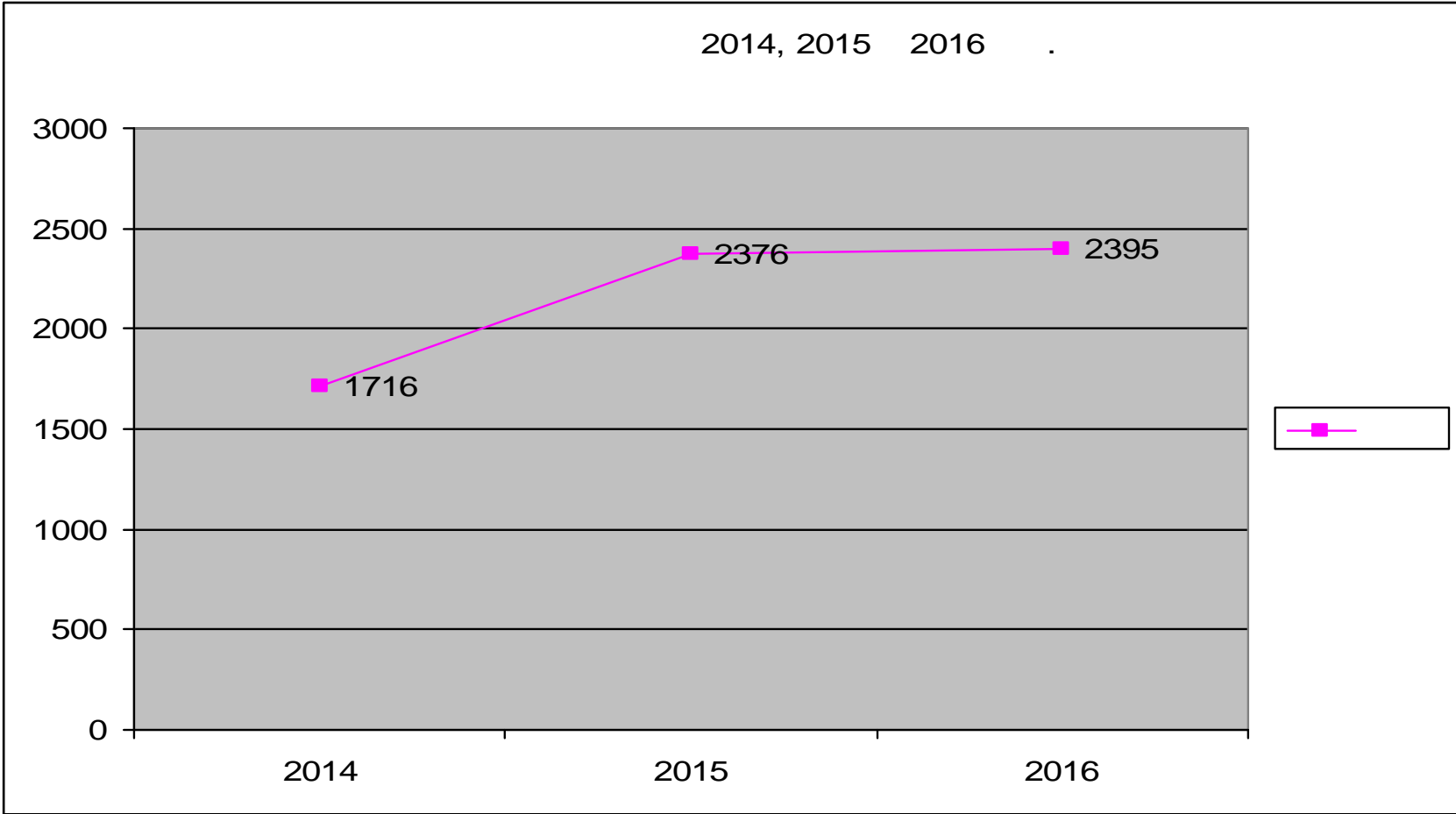
-

- 2015 2014 .

,

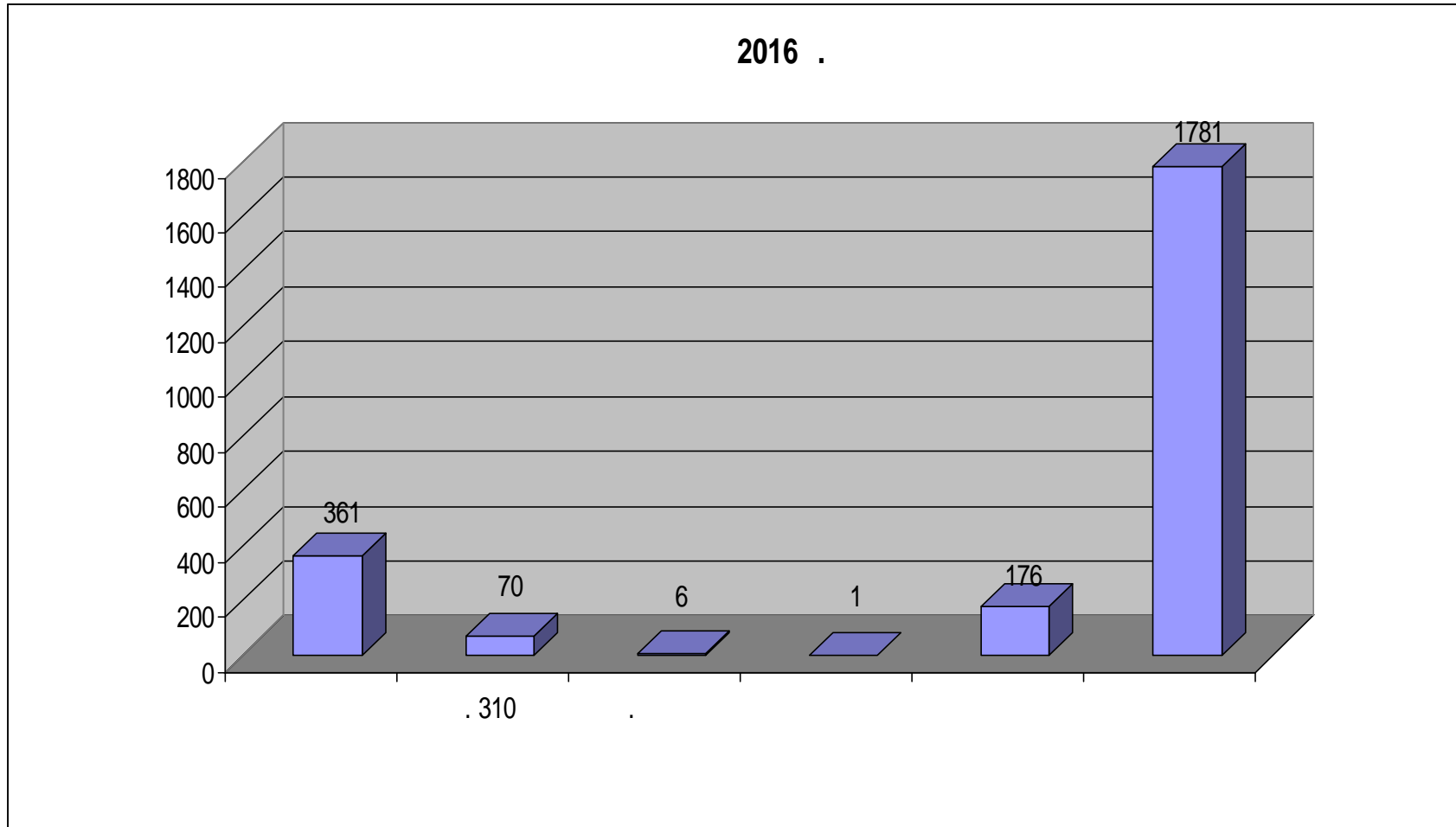


■



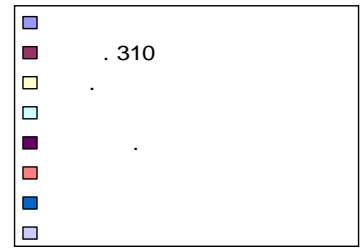
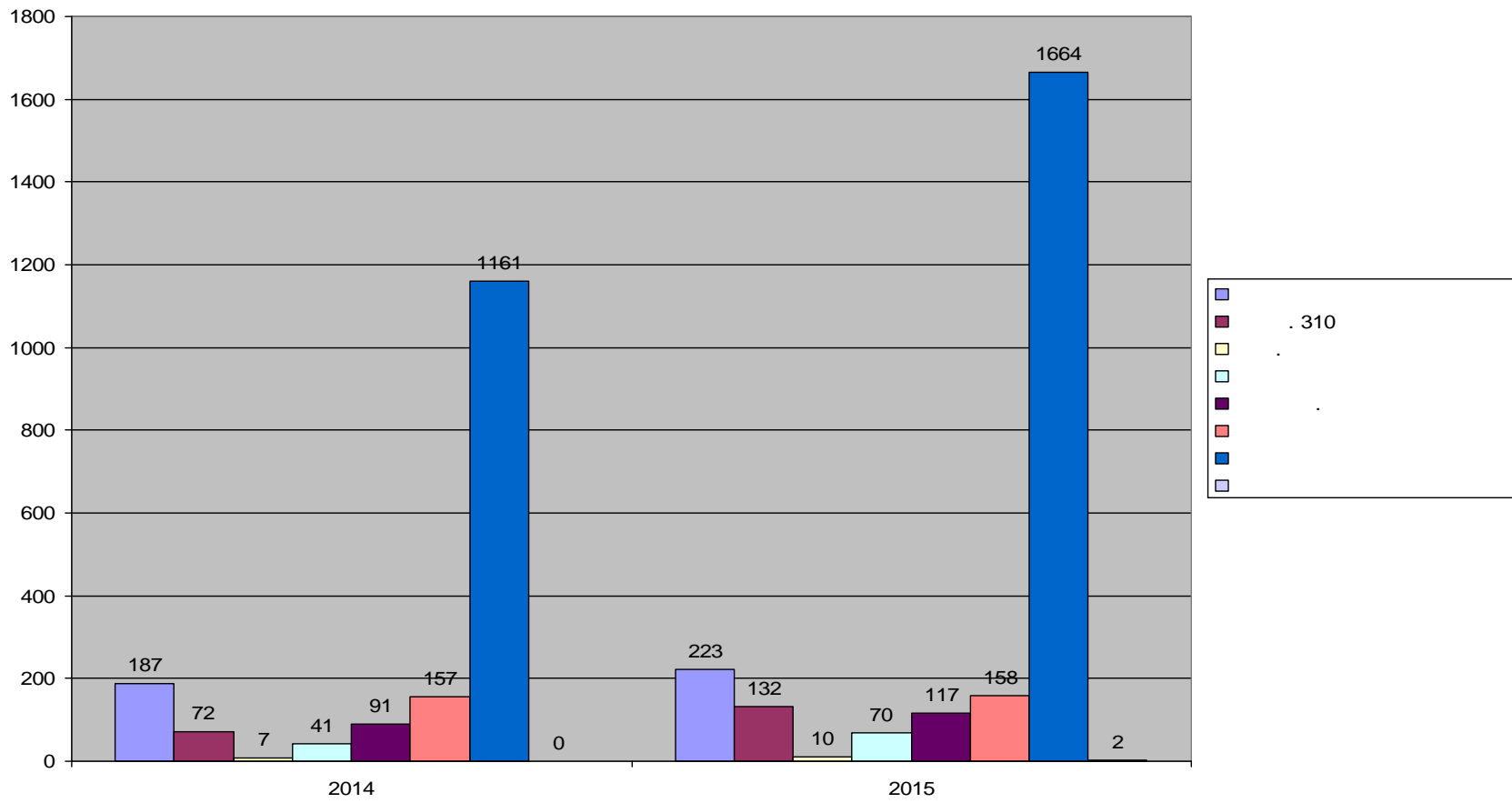


-



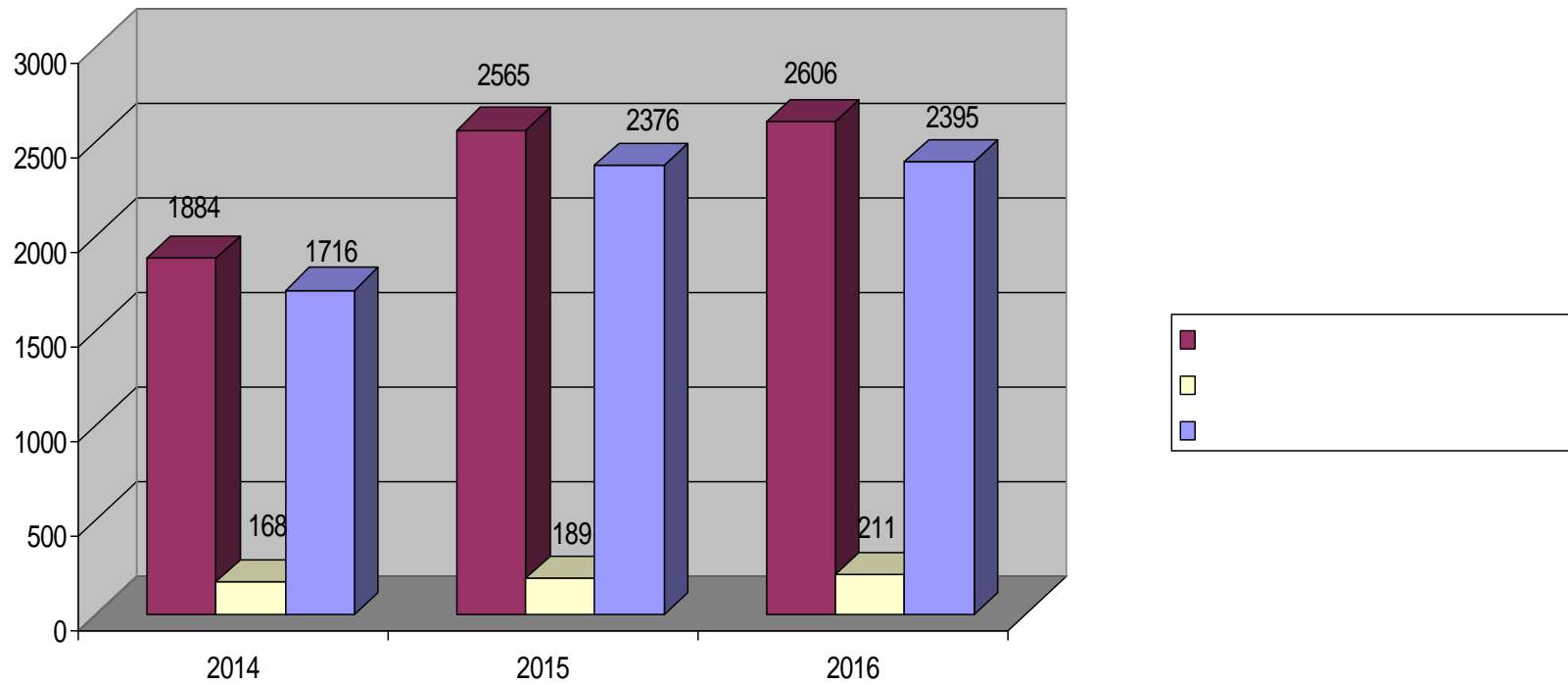


2014 2015



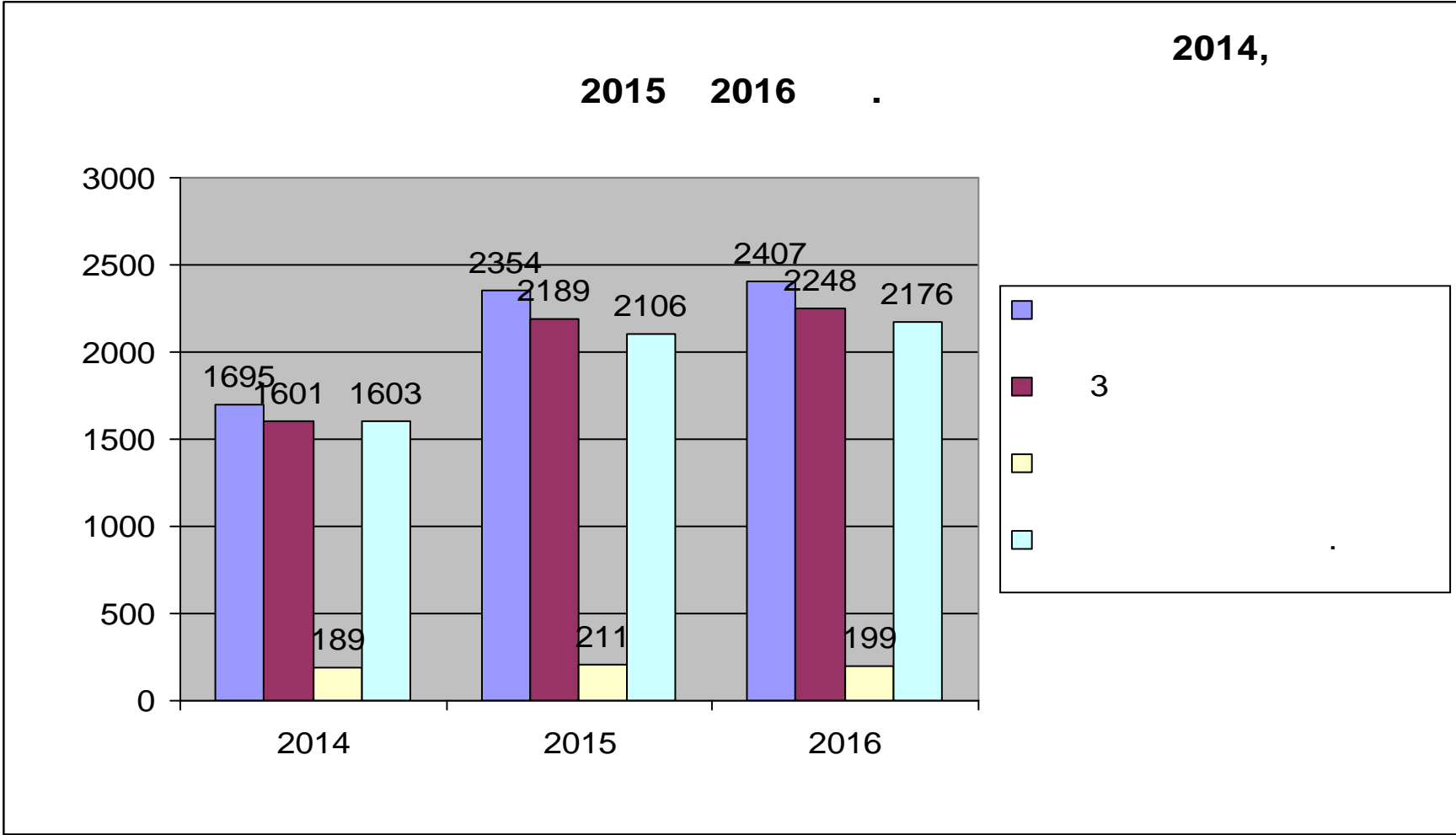


- 2014, 2015 2016 .



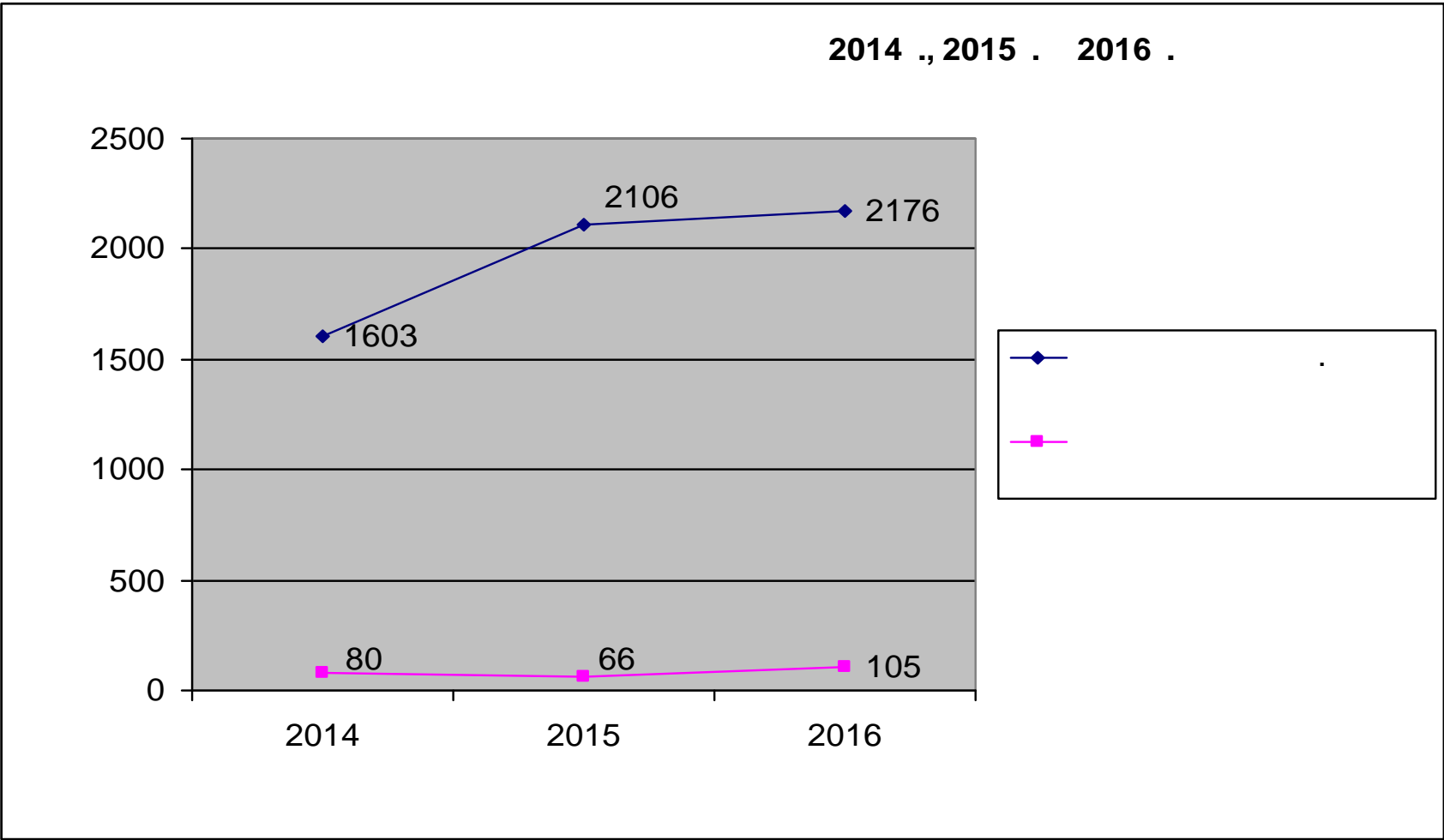


-



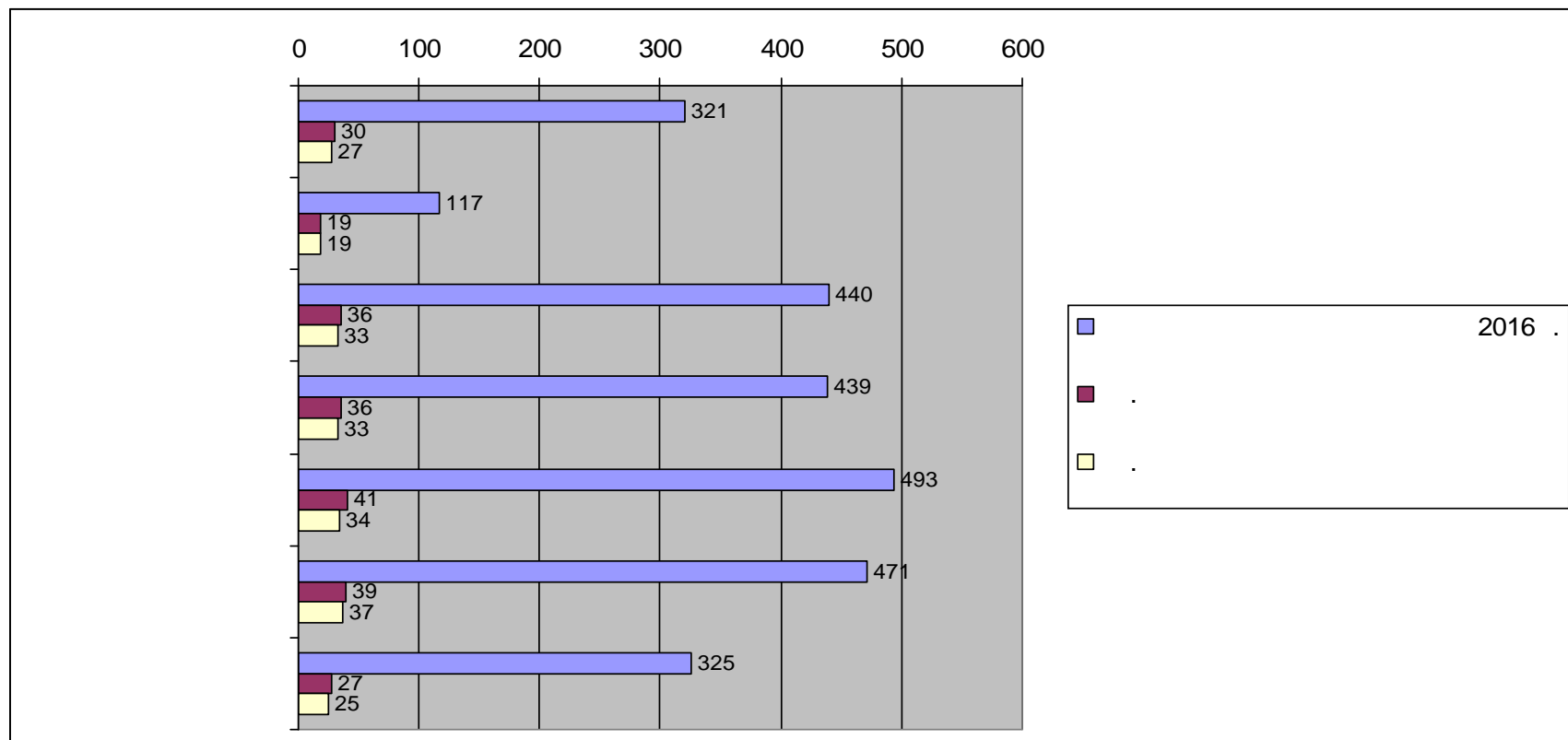


-





2016 .





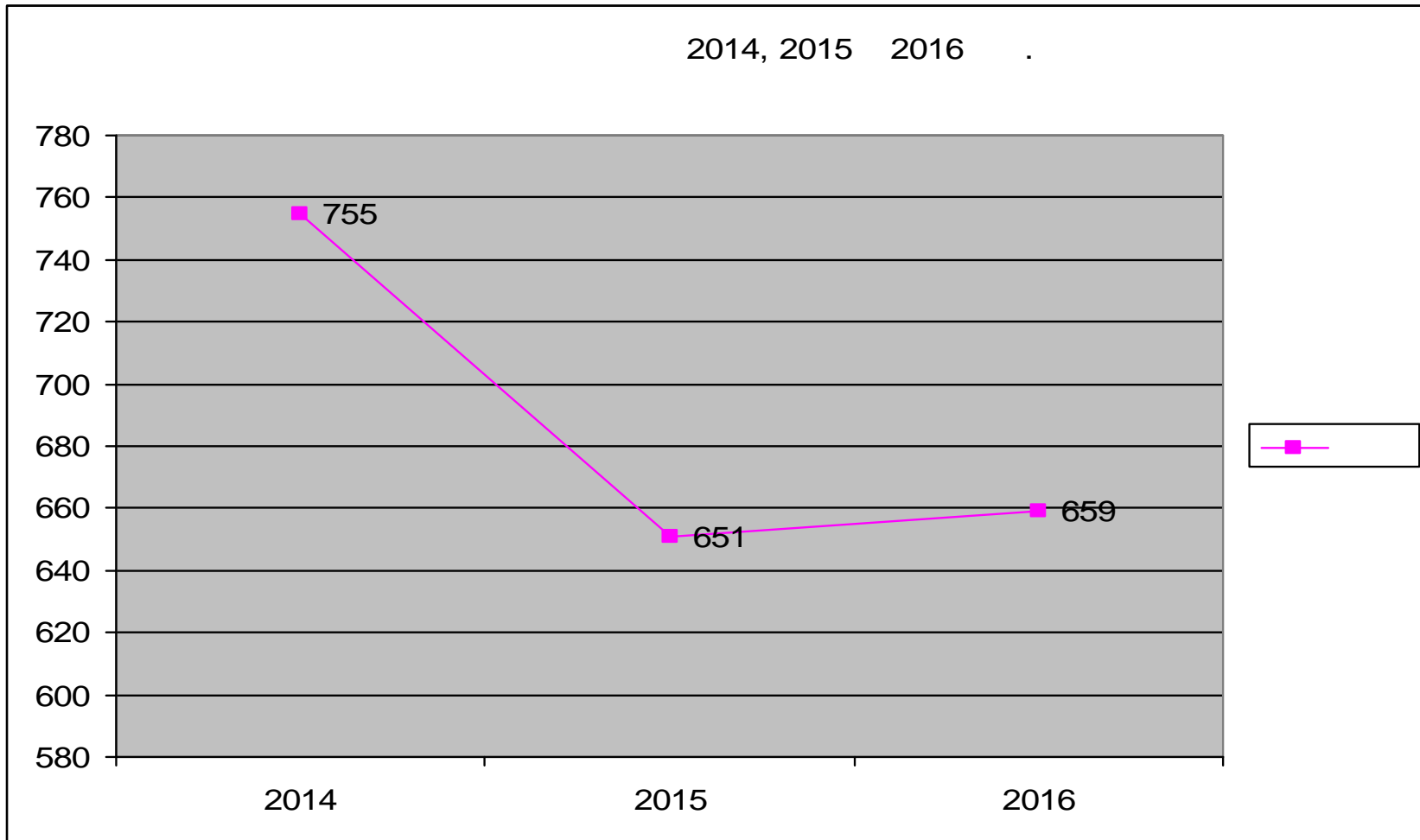
-

- 2015 2014 .

,

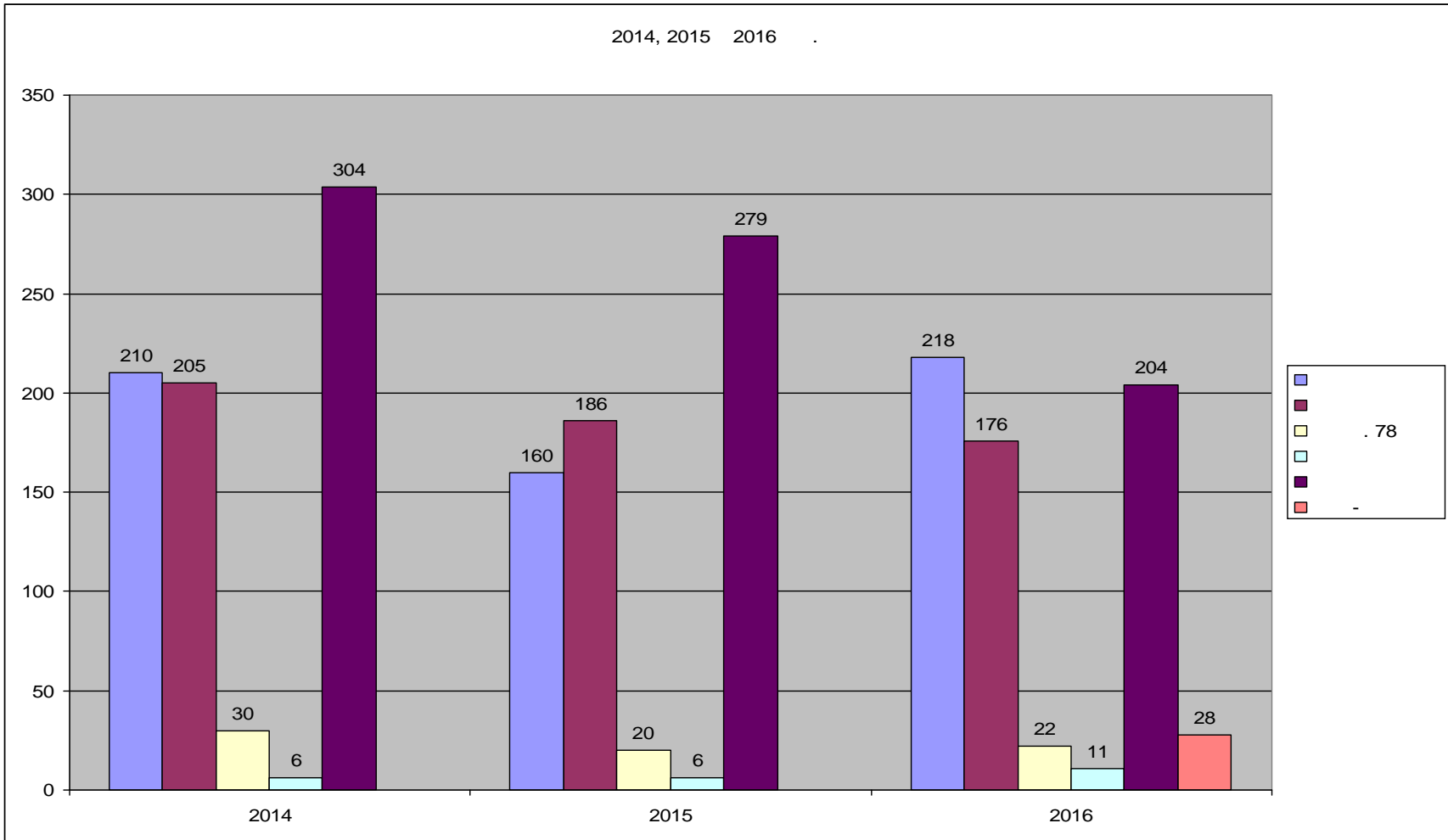


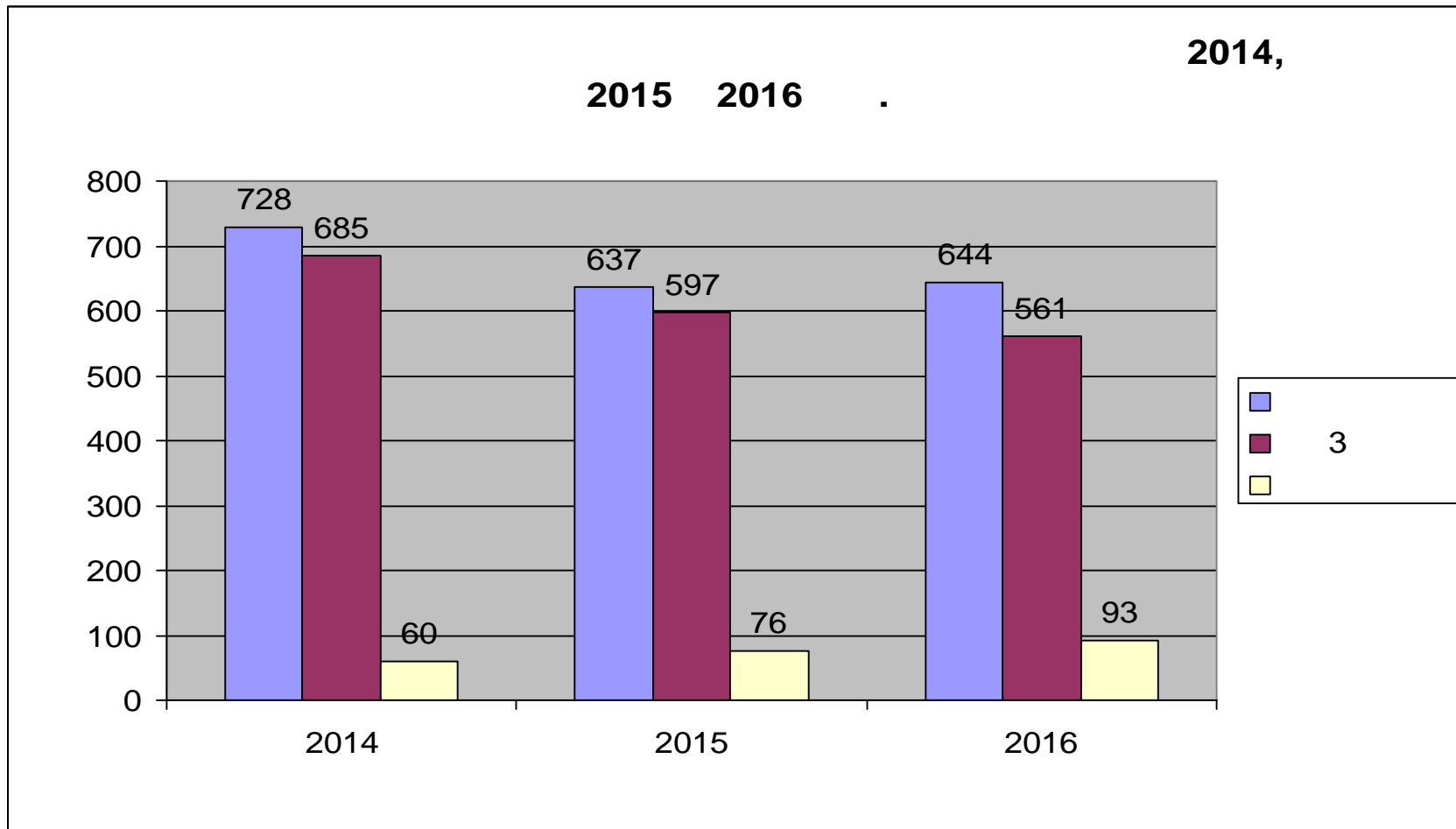
2014, 2015 2016 .





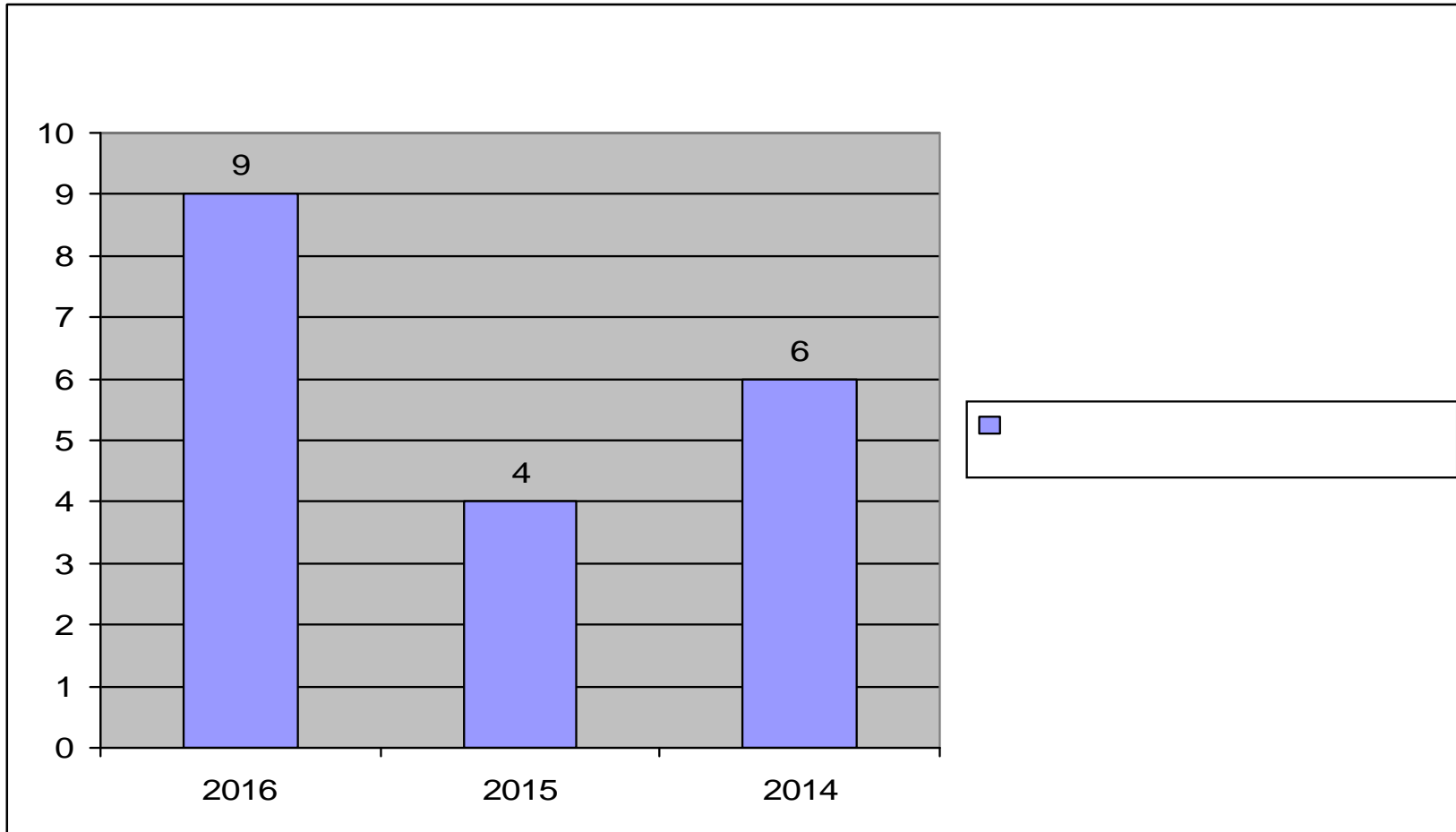
-







-

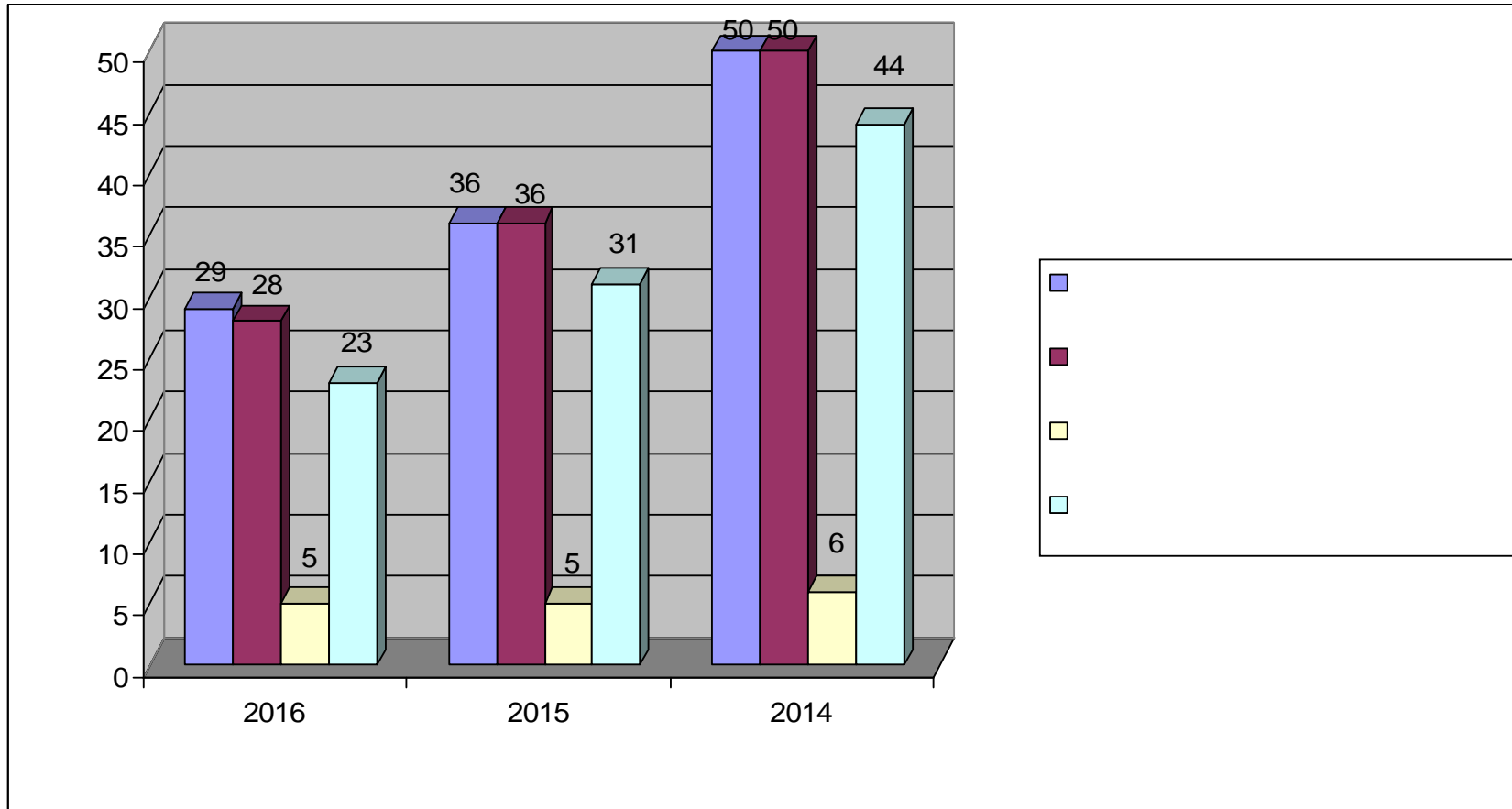


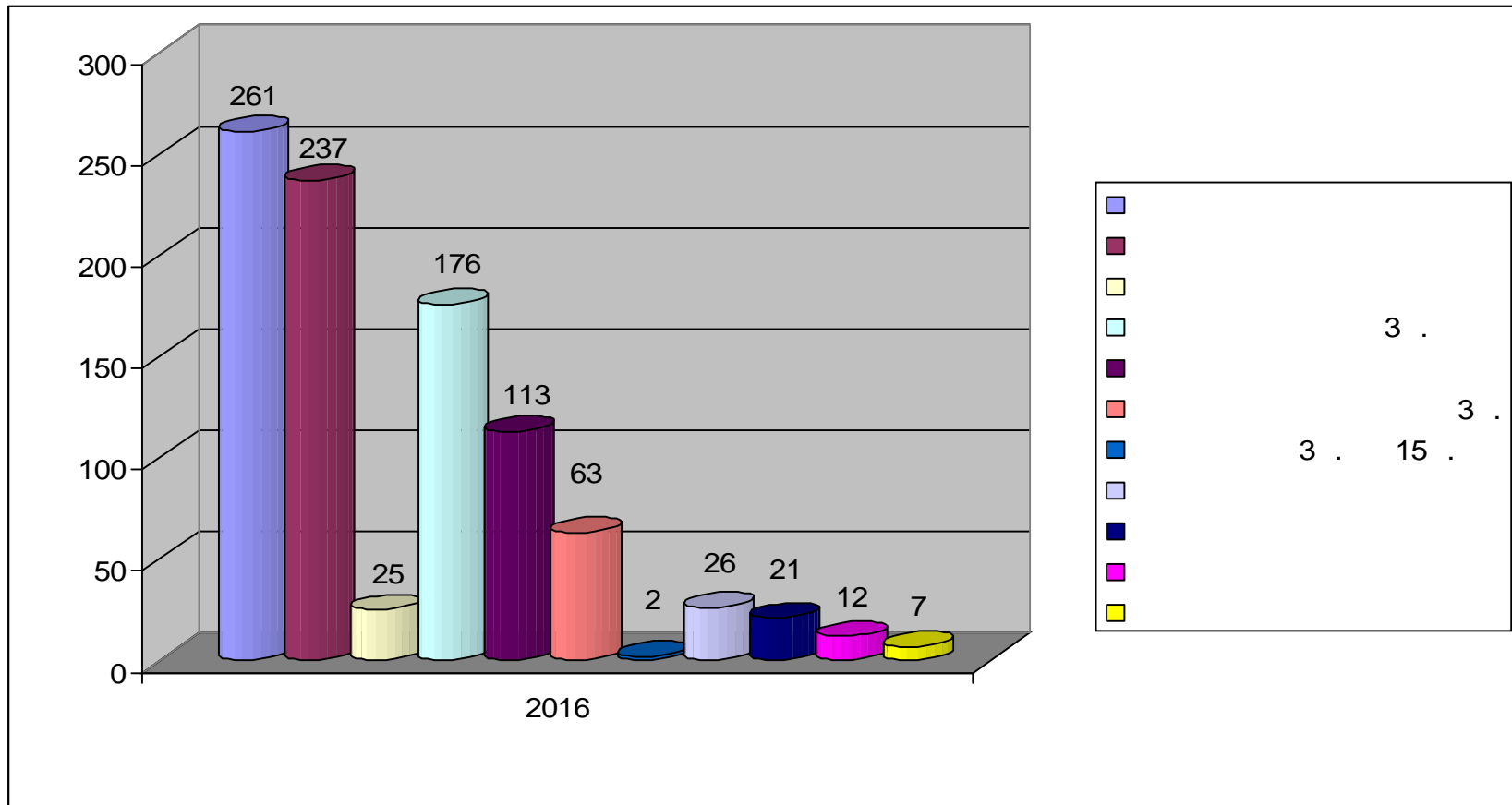


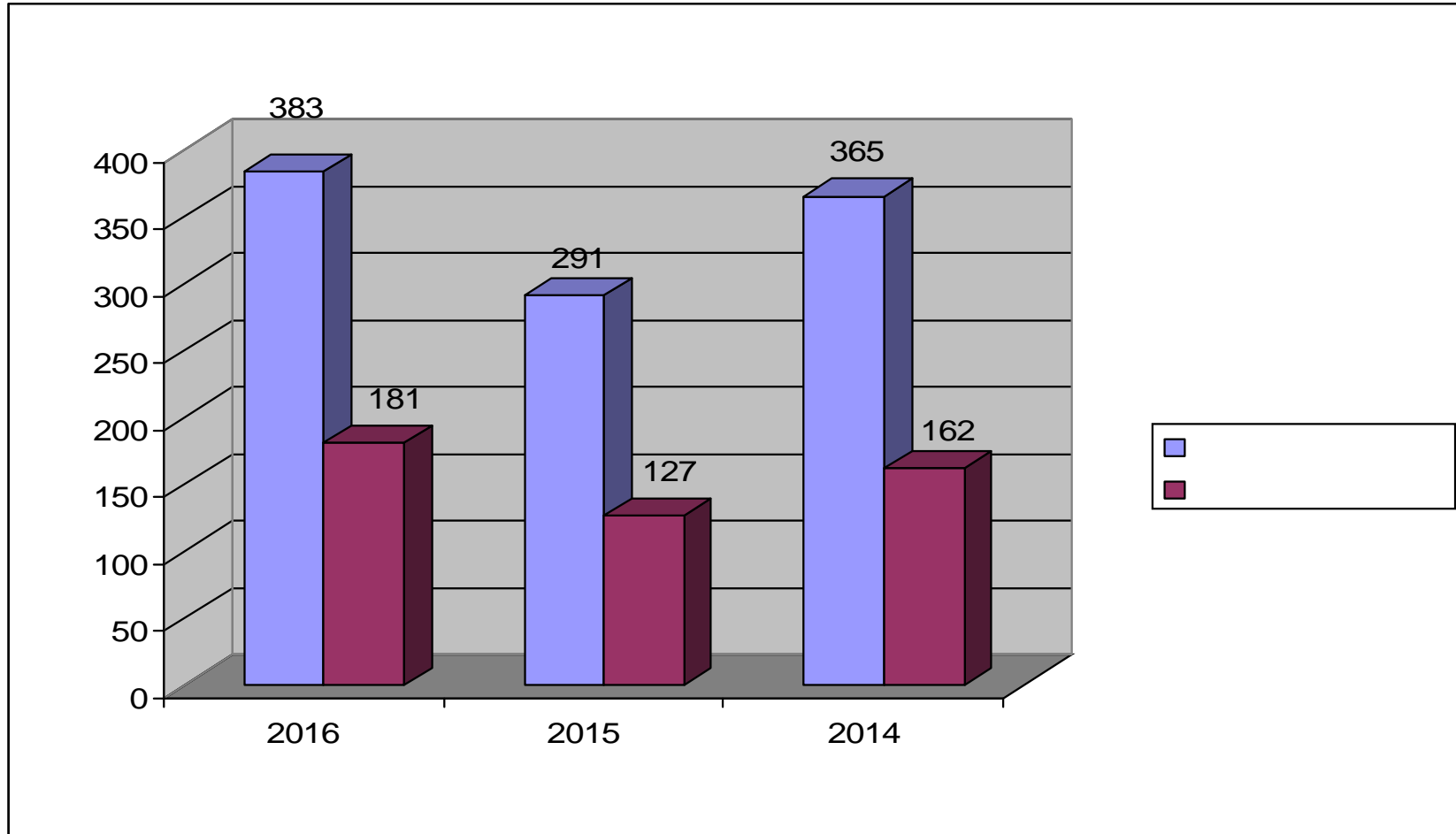
V

”

”









-

111 , 2014 . – 157 . 131 . 2016 .
2016 ., 2015 .

:

- 28 ;
- 3 ;
- 9 ;
- 91 .



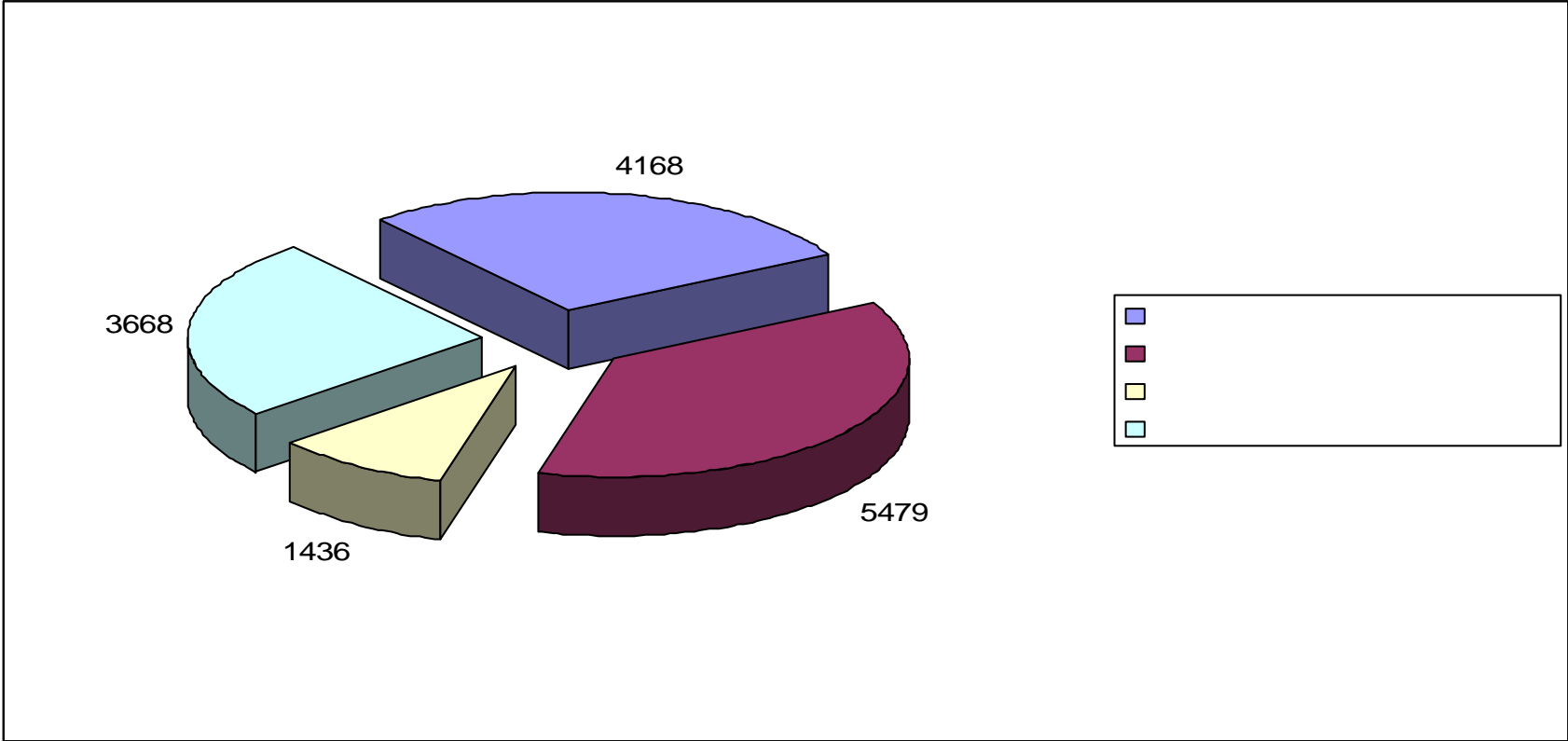
-

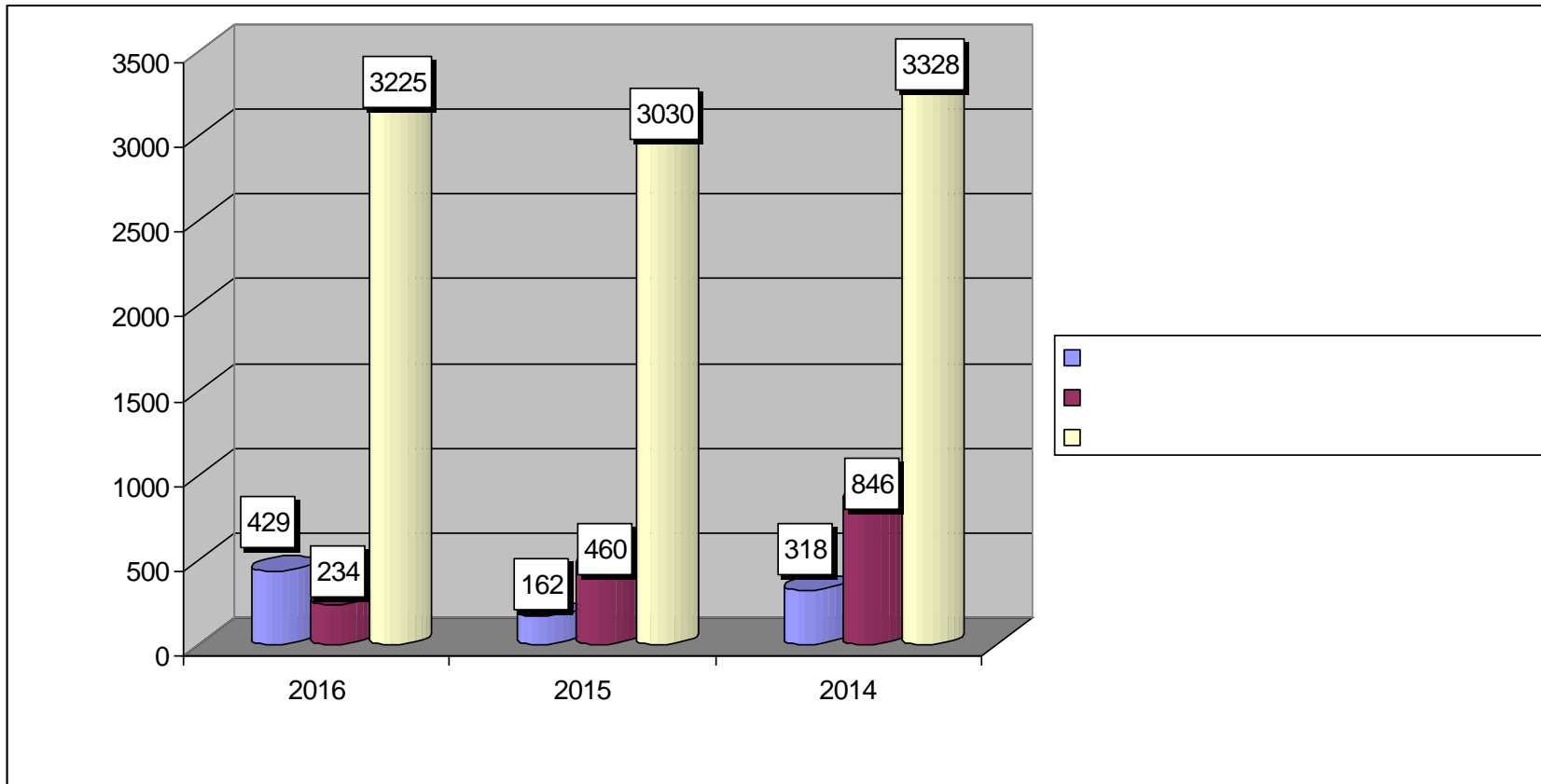
- **2016 .**
- **26** ,
- **93** ,
- **14** ,
- **4**



-

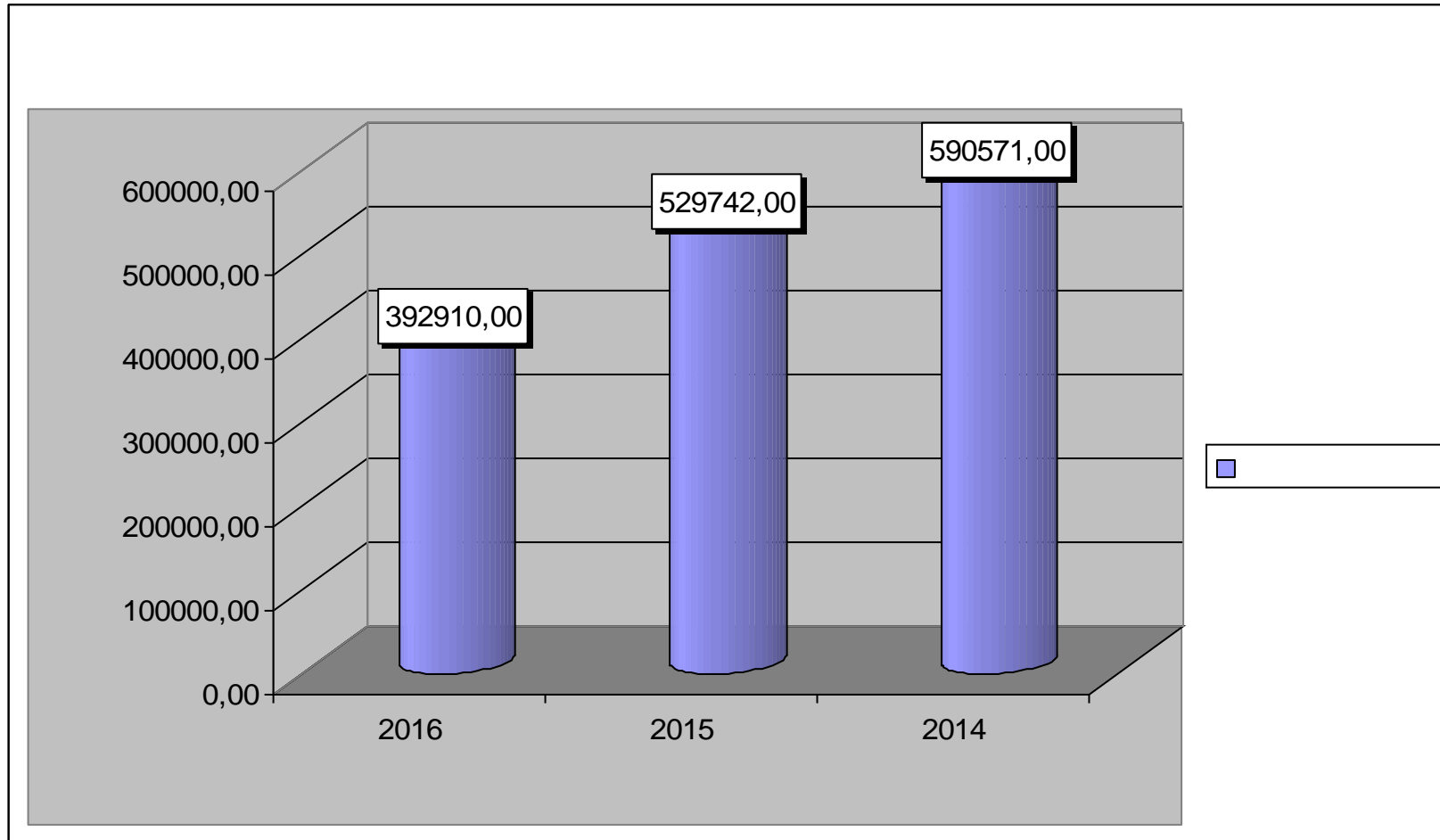
2016 .







-





-

2016 .

,

:

- -
- -
- -
- -
- -

- 10 ;

- 55 .;

- 196 ;

- 3194 ;

/

,

.

,

,

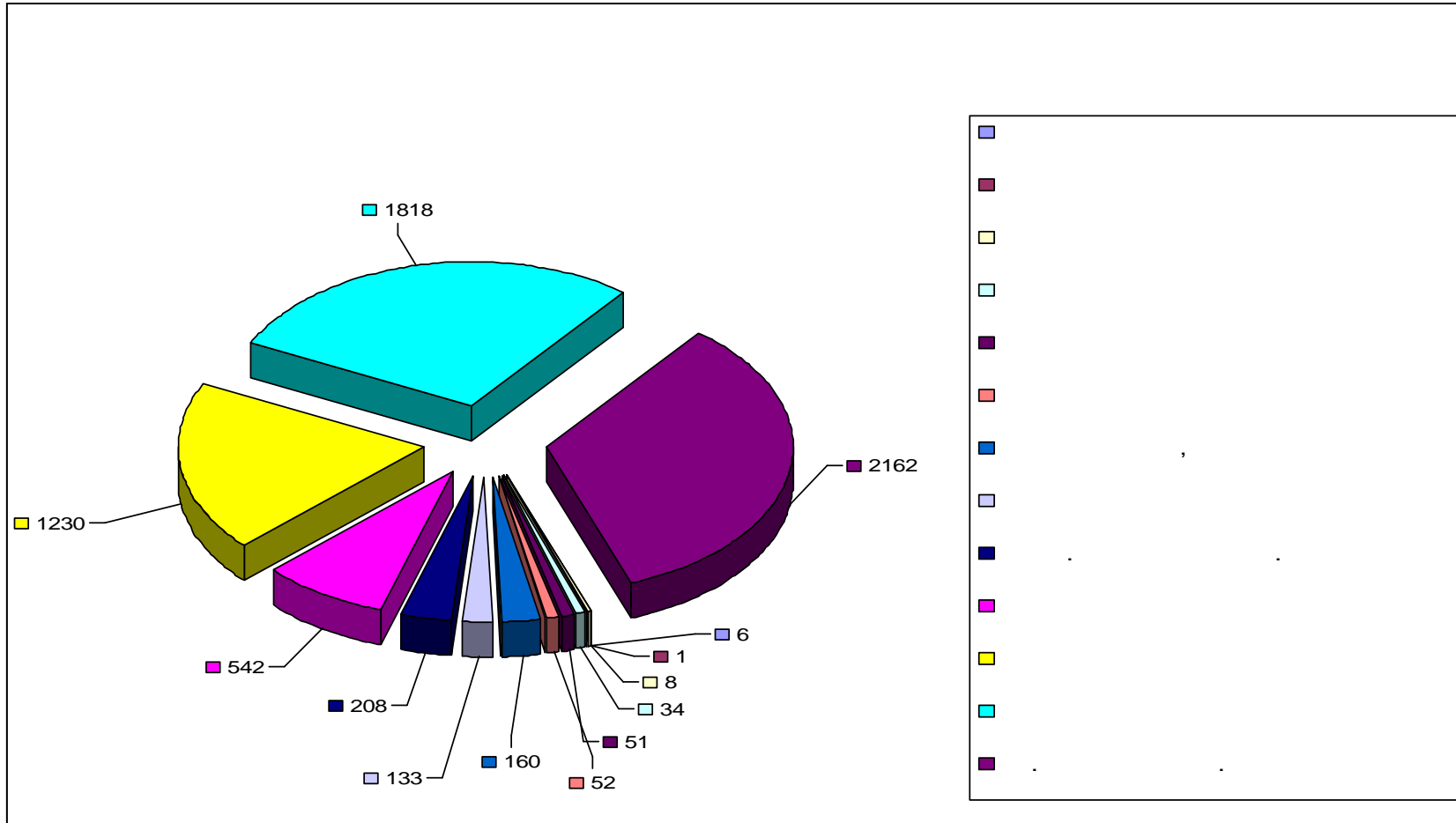
./ -

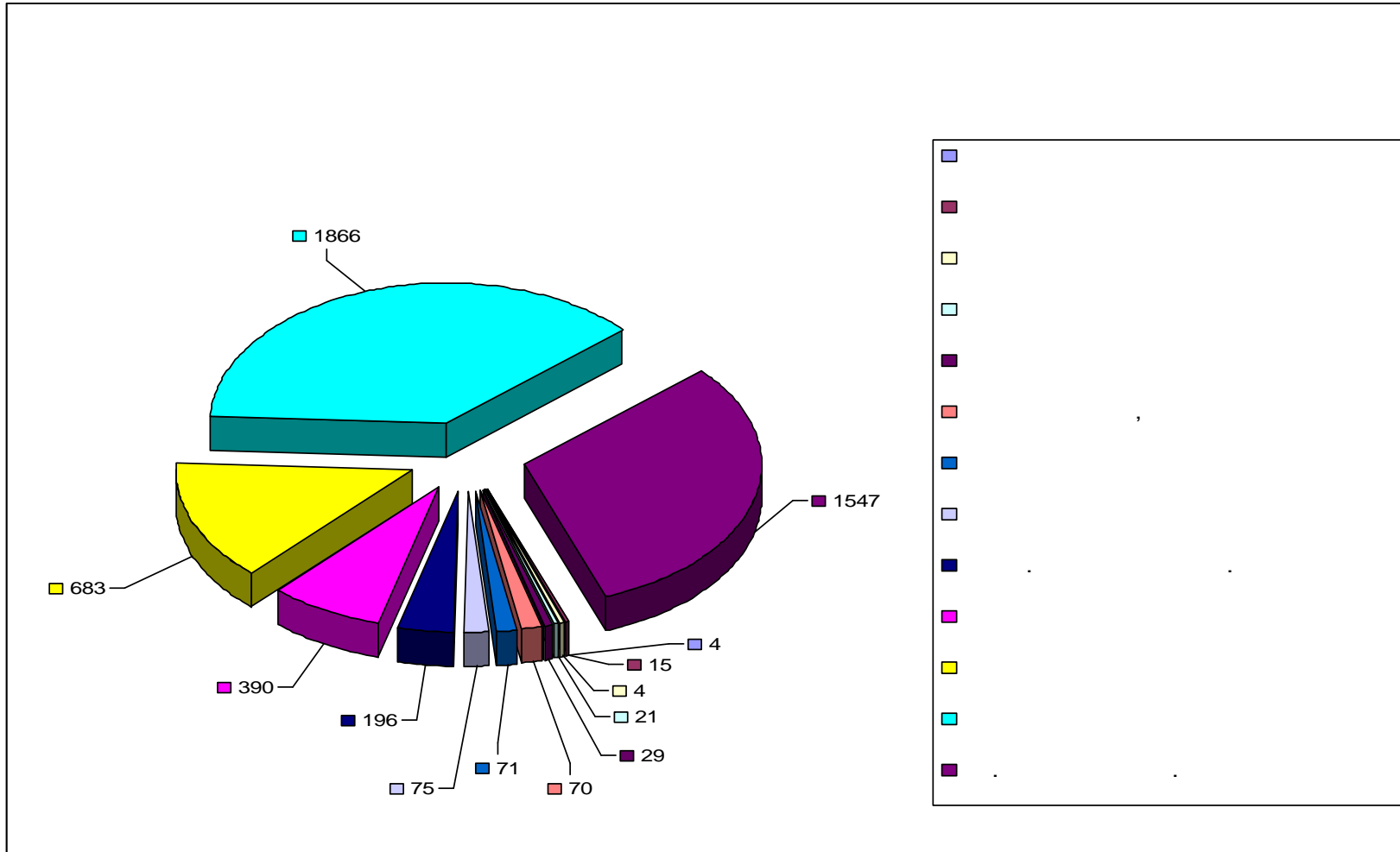
5076 .

1913 .

932 .

.







***Благодаря Ви за
вниманието***